

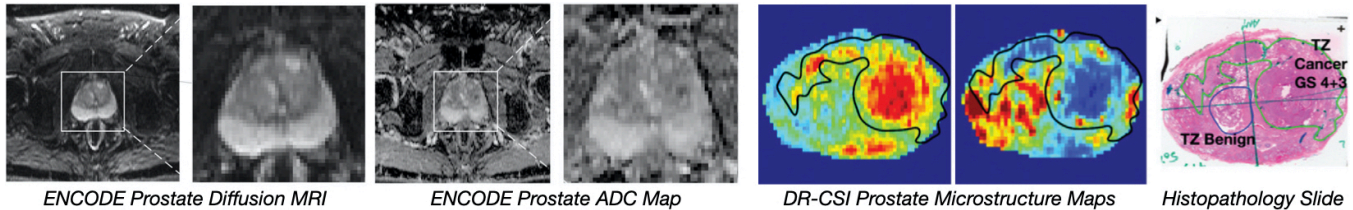


David Geffen  
School of Medicine

**UCLA** Health System

## Post-Doctoral Fellow Position in MRI Research

The **Magnetic Resonance Research Labs (MRRL)** in the Department of Radiological Sciences at the University of California Los Angeles has an immediate opening for a post-doctoral fellow in MRI research under the mentorship of Dr. Holden Wu. The successful candidate will develop and translate novel acquisition, reconstruction, modeling, and analysis techniques for **Quantitative Prostate Diffusion and Microstructure MRI** to improve prostate cancer detection and classification. The successful candidate will work with a multi-disciplinary team of scientists, radiologists, pathologists, and urologists, and will also be encouraged to pursue new research directions.



**Qualifications:** We are looking for candidates with a strong background in engineering/MR physics who are motivated to elevate or acquire new skills in pulse sequence design, image reconstruction, quantitative signal modeling, data analysis, machine/deep learning, and translational imaging applications. Applicants should hold a Ph.D. in biomedical engineering, electrical engineering, biomedical physics, computer science, or related discipline. Prior experiences in pulse sequence programming and publications on quantitative prostate MRI are desirable but not required. Previous experience on the Siemens platform is preferred but not required.

**About UCLA MRRL:** The MRRL currently has seven faculty members and more than 30 staff, students, and post-doctoral research fellows. The MRRL collaborates closely with clinicians and engineers at UCLA. The MRRL has access to five clinical research Siemens MRI systems (3T Vida, 3T Prisma, 3T Skyra, 1.5 T Sola, and 1.5T Avanto Fit systems), as well as a dedicated imaging research facility for pre-clinical studies (including one 3T Prisma). For more information, please visit <http://mrri.ucla.edu/wulab/>

**To Apply:** Email (1) an updated CV, (2) brief statement of research experience and interests, and (3) contact information for 2-3 references to:

Holden Wu, Ph.D., Associate Professor, [HoldenWu@mednet.ucla.edu](mailto:HoldenWu@mednet.ucla.edu)

The University of California is an affirmative action/equal opportunity employer.